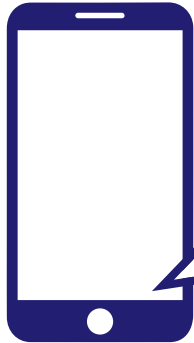
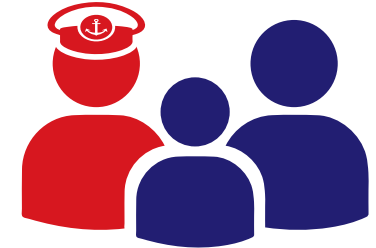


# ISWAN Insights: Spotlight on Q3 2023

1st July – 30th September 2023



**1,371** new calls and messages to ISWAN's helplines  
(i.e. the first contact in a new case)  
▲ **6%** compared to last quarter



**3,766**

seafarers and family members assisted by ISWAN

## Key trend

### REPORT



### ABUSE

▲ **56%** cases of abuse, bullying, harassment, discrimination and violence (ABHDV)



including a **233%** increase on Yacht Crew Help



**38%** of seafarers contacting ISWAN in relation to ABHDV were women, where gender is known



**12%** of all seafarers contacting ISWAN's helplines were women in 2023 Q3

## Trends by helpline



▲ **64%**

contacts relating to fatigue since last quarter



▲ **107%**

contacts relating to contractual issues since last quarter